

SCOTSMAN

AUTOMATIC AIR COOLED FLAKE ICE MAKER / DISPENSER

T D E 4 7 0



VOLUME PRODUCTION • 24 HOUR

Based on Air/Water Temperatures	Air-Cooled	
	70°/50° lbs.	90°/70° lbs.
TDE470	470/213	350/159

YOU'LL VALUE OUR UNIQUE TOUCHFREE® ICE MAKER/ WATER DISPENSERS

- Convenient one-hand operation - sensors determine when to dispense water or ice.
- No risk of cross-contamination.
- Complies with the most stringent requirements of the National Sanitation Foundation and the spirit of the American with Disabilities Act.
- Photoelectric eye bin control allows for maximum ice storage.
- Makes and dispenses flake ice.

WARRANTY *See your dealer for complete warranty details.*

- 2 years parts on all components.
- 2 years labor on all components.
- 5 years partson the compressor.



WATER/ICE SELECTION SWITCH

Select ice only or ice and water at the touch of a switch, conveniently located on front panel.



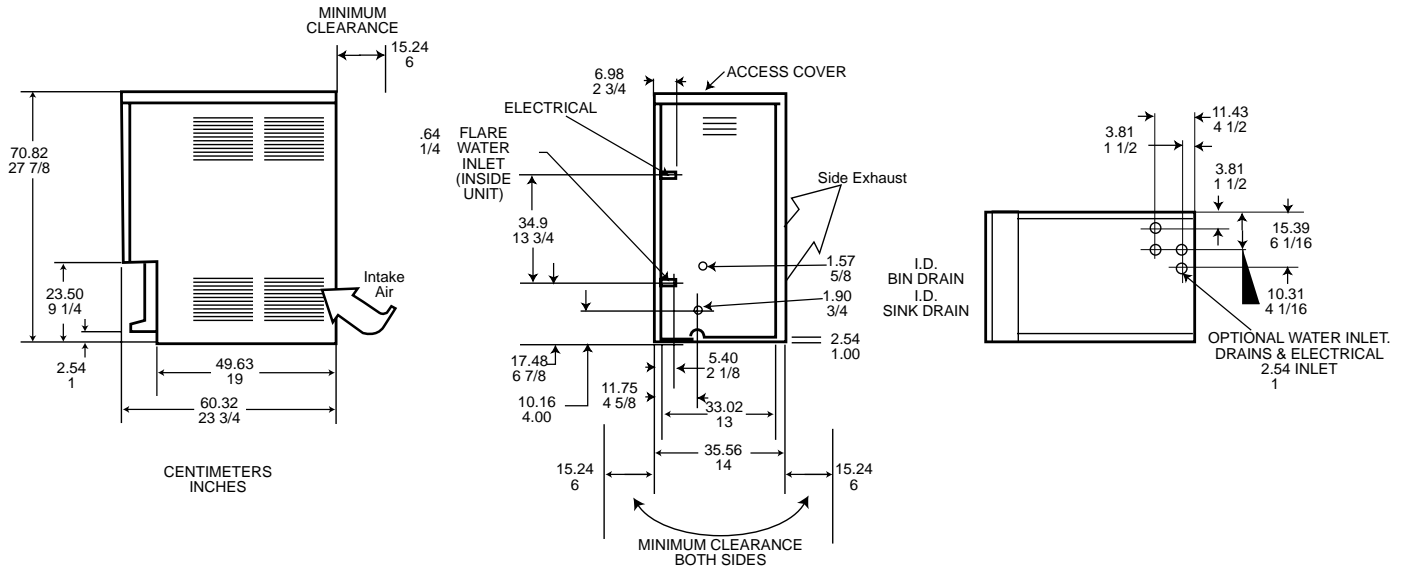
SANITARY, ONE-HAND OPERATION

Easily fills various size and types of containers.

This product qualifies for the following listings:



Ice Machine Specifications



All models: Dimensions W x D x H: Unit: 14" x 23³/₄" x 27¹/₈" Shipping Carton: 17" x 26" x 33"

Model Number	Condenser Unit	Bin Capacity lbs./kg.	Basic Electrical Volts/Hz/Phase	Max. Fuse Size or HACR Circuit Breaker	Comp. HP	Circuit Wires	Min. Circuit Ampacity	Shipping Weight lbs./kg.	Power Consumption KWH/100 lbs. 90°/70°F	Water Usage Gallons/100 lbs. 90°/70°F	
										Potable	Condenser
TDE470AS-1A	AIR	12/5	115/60/1	20	1/2	2	14.9	155/70	5.6/4.1	12	12

All units with Stainless Steel finish.
Refrigerant - R-134A

OPTIONS:
KDE1A : Drain Extension Kit (6").
KDE1ASS: Stainless Steel Drain Extension Kit (6").
SPKTDE470: Stainless Steel Panel Kit. Not factory installed.
KWB1: Wall mounting kit.

Scotsman's ice machines are not designed for outdoor installations. Scotsman remote condensers are designed for outdoor installations.

Machine requires voltage indicated on rating name plate. Failures caused by improper voltage are not considered factory defects. Extended periods of operation at temperatures exceeding limitations constitutes misuse under the terms of Scotsman Manufacturer's Limited Warranty, resulting in a loss of warranty coverage. Specifications and design are subject to change without notice.

Consult Your Local SCOTSMAN Representative At:

IMPORTANT OPERATING REQUIREMENTS:

	Minimum	Maximum
Air Temperatures	50°F (10°C)	100°F (37.7°C)
Water Temperatures	40°F (4.4°C)	100°F (37.7°C)
Water Pressures	20 PSIG	120 PSIG
Electrical Voltage	-5%	+10%

YOU'LL VALUE THE DIFFERENCE™

775 Corporate Woods Parkway • Vernon Hills, IL 60061 • 1-800-SCOTSMAN • (847) 913-9844
Visit our website at: www.scotsman-ice.com • E-mail: customer.service@scotsman-ice.com